

Update to DSG Members

Mark Rouse
Dounreay Managing Director
12th March 2014

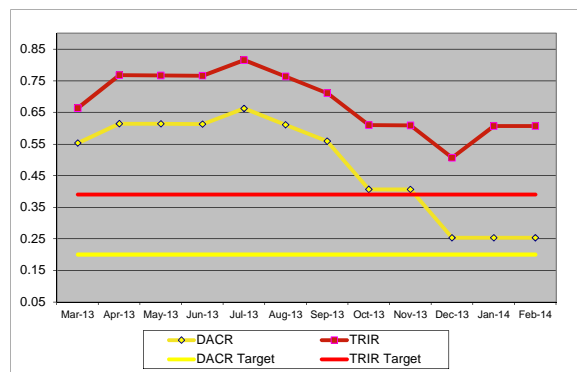


Agenda

- Safety & Environment
- Project Achievements
- Neighbours
- Staffing
- Reprofilng the plan
- Socio-Economics

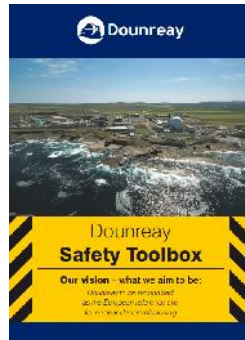
Safety – TRIR & DACR

- Total Recordable Incident Rate
- Days Away Case Rate



Safety

MindSafety™
the "Belief Based" Culture Change People

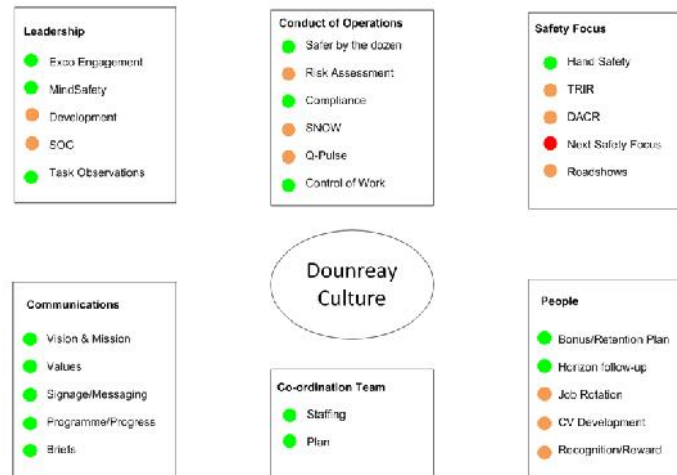


Cavendish
Dounreay
Partnership
A partnership between
Cavendish CHM HCL LRT



Dounreay

Dounreay Culture Consolidation



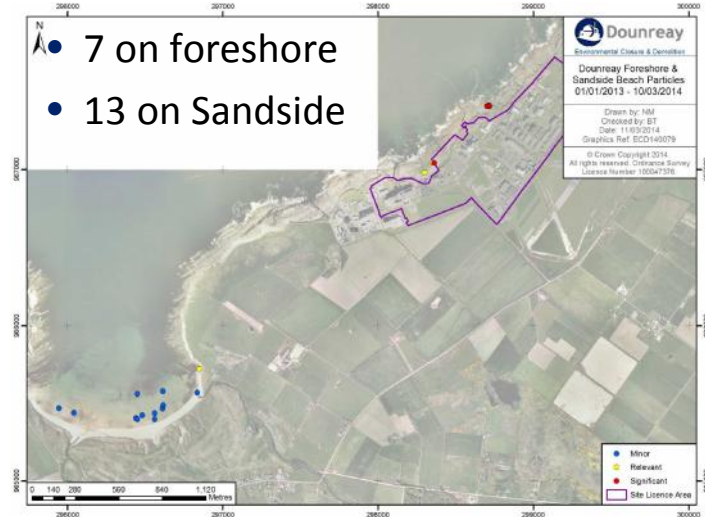
Environmental

- SEPA assessment of compliance for 2013
 - excellence for liquid and solid Authorisations
 - broad compliance for gaseous Authorisations.

Environmental Limit Conditions (ELCs)

	No Breaches	Minor Breaches/ 1 Gross Breach	Significant Breach/ >1 Gross Breach or repeated minor breach
High Performance	Excellent <small>Zero LSCs Zero LSCs Zero LSCs</small>	Good	Poor
Medium Performance	Good	Broadly Compliant <small>CAR extraction</small>	Poor <small>Site-wide VMS</small>
Low Performance	At Risk <small>RSA Gross LSCs</small>	Poor	Very Poor

Particles



Environmental Remediation

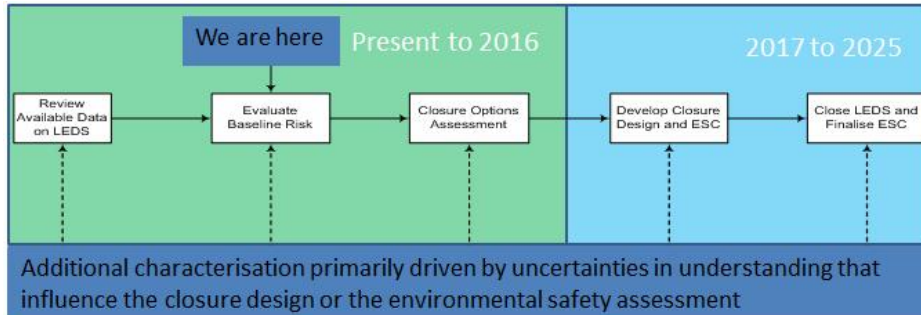
- Regulatory agreement for the environmental safety strategy
- Zone 1B Report & Plans to Regulators
- Vegetation Trials
- Completed characterisation of 2 zones
- Completed the ER Programme Plan – the roadmap to closure
- IES user's guide
- Various sampling efficiencies – triple volume – no cost/staff increases



The Old Diffuser

- Liquid Effluent Discharge System (LEDS)

- Reviewed our approach
- Intend to manage the closure of the entire LEDS in a holistic manner.



Reactors

- Radiological profiling of the reactor vessel
- Equipment strip out/recycle – electrical, ventilation, lead baths, DFR pond furniture
- Continued Sodium Inventory Disposal (SID) processing (88 loads)
- Started construction of treatment skids for alkali metal wetted reactor systems.
- Started design for reactor large component decommissioning



Shaft & Silo

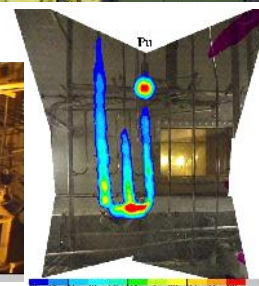
- Planning permission achieved
- Preliminary Safety Case (PSR) approved
- Design Progressing
 - Derisking @ T3uk
- For 2014
 - Scheme design complete



Cavendish
Dounreay
Partnership
A partnership between
Cavendish (CDM HSE) Ltd

Fuel Cycle Area

- D1251 complex decommissioned
- D1217 ILW removal complete
- D1204 progress
- D1211 Cover complete and decom started
- D1206 characterisation complete



Cavendish
Dounreay
Partnership
A partnership between
Cavendish (CDM HSE) Ltd

Waste

- MTR Raffinate complete – mods started for DFR
- New supercompactor being installed
- New LLW Facility complete
- D3110 Conversion – scheme design underway – ILW store



Security enhancements projects

- CNC firing range
 - Progressing well on schedule, temporary roof, completion due July 2014
- Perimeter Security Enhancements



Planning

- Phase 2 Planning Permission in Principle was approved in May 2013
 - Shaft & Silo
 - Demolitions
 - Existing LLW store to ILW for 15 years
- Dounreay Planning Framework
 - Approved in Feb 2014
 - Minor emerging applications
- Phase 3 – 2018 to IES
 - Submitted in 2016



**Cavendish
Dounreay
Partnership**
A partnership between
Cavendish CH2M HILL URS

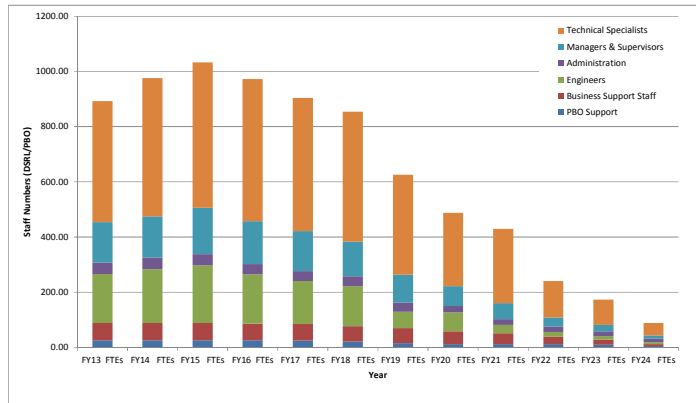
Neighbours

- Litter
- Vaults 1+ 2
- Existing LLW Pits
- Future vaults
- The silo incident
- Firing range



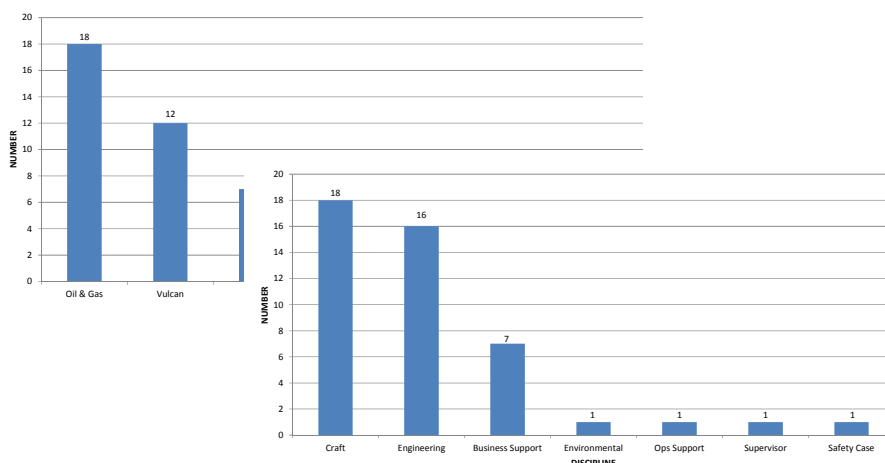
**Cavendish
Dounreay
Partnership**
A partnership between
Cavendish CH2M HILL URS

Staffing Plan

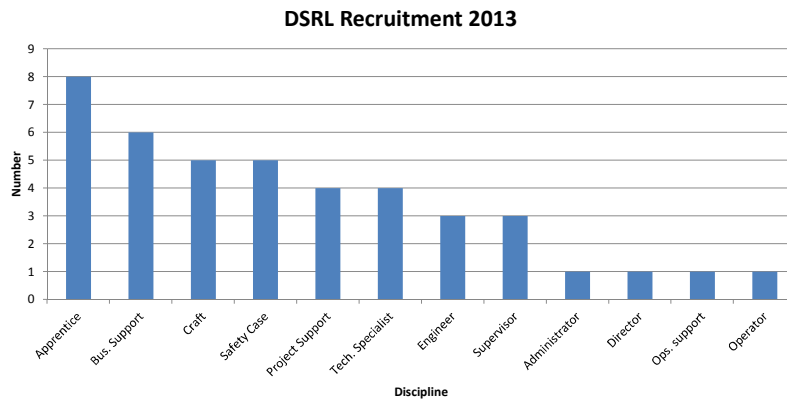


- Sept 2013
- Pre – JCL and BNS
- Published as per contract – www
- To be updated post ASFL Review

Retention Issues – 2013



Recruitment - 2013



Reprofiling the Plan

- Messages to staff
 - 27th Feb
 - 6th March
 - Recognise change is unsettling so continuing to brief internally
- Key Points
 - No funding cuts – extra work
 - Still working on this
 - No redundancies – need to recruit



Socio-Economics

- European Reference Site
 - VIP Visits – since April – 30 (129 people)
 - UK, Japan, France, USA, Canada, Spain
- Heritage – continuing to identify artefacts – plans for conference in 2017 (9/10 May)
- HIE Secondment – working well
- CNSRP Targets
 - Recent clarity on targets – 1600 to 2200 jobs needed by 2025
 - Actions defined
- DSRL Plans
 - Business starts, spin-outs, procurement, PBO support



Next Year...

- Continue to refine the decommissioning plan
- Continuing transition of secondees
- Continued project progress
 - Build on the good work to date
 - Get the best from our people
 - Help our people develop
 - ...but must not be complacent
- Continue to support CNSRP for life after Dounreay and work together to prepare for this





Questions?



**Cavendish
Dounreay
Partnership**
A partnership between
Cavendish CH2M HILL URS