



Corporate Report

Socio-economic report 2017/18

Contents

1. Our overall strategy
2. Economic evidence
3. Our overall approach
4. Total Group Commitments
5. Wales
6. Magnox Ltd expenditure
7. Dounreay Site Restoration Ltd expenditure
8. Caithness & North Sutherland Fund
9. Sellafield Ltd expenditure
10. Low Level Waste Repository (LLWR)
11. Copeland Community Fund expenditure
12. Nuclear Decommissioning Authority direct expenditure
13. Outcomes and evaluation

1. Our overall strategy

In line with its legal obligations, the NDA takes due regard of the impact of its activities in the communities around its sites.

The NDA's decommissioning work supports a considerable number of jobs in some remote parts of the UK. We strive to maximise the value of the assets we own on behalf of the taxpayer, for example, by reusing land and buildings wherever possible.

We also spend around 1% of our overall expenditure on local projects.

This funding is intended to help local communities affected by the changing levels of economic activity at our sites. If local communities are particularly reliant on nuclear sites, we work with local partners to help develop alternative economic opportunities. In the pages below there are a number of examples of such projects.

We also fund projects that develop local skills and businesses to take advantage of the economic opportunities from decommissioning. Funding is allocated on an assessment of local needs and on the basis of a competitive process to projects and organisations meeting these local needs.

Our 4 principles

- **Local:** the NDA group's socio-economics work is about local communities and this should mean they are involved and consulted on projects
- **Evidence:** we use data to determine where and when to prioritise budget and we need to evaluate the
- **impact of what we do**
- **Governance:** our budgets come from the taxpayer which means we need excellent governance, planning, record-keeping, financial reporting and audit
- **Outcomes:** we want to make a difference and a real impact. We look at the outcomes from our work and put inform

Our 5 objectives

- **Education and Skills:** to enhance opportunities for local people to be involved in decommissioning work or other economic activity through education, retraining and skills development.
- **Employment:** to create sustainable economic opportunities to enable the workforce to continue to live and work in the local area before and after site closure.

- **Economic and Social Infrastructure:** to increase the attractiveness of areas near our sites as places to live, work and invest in, with particular emphasis on achieving environmental, social and infrastructure improvements.
- **Economic Diversification:** to support the diversification of local economies into other sectors – reducing the reliance of communities on nuclear sites for employment - by increasing the number, variety and vibrancy of local businesses, promoting entrepreneurship and taking steps to attract new enterprises.
- **Being a Good Neighbour:** small scale community-based and social projects near our site.

2. Economic evidence

We base our socio-economic decisions on evidence, therefore we carry out economic studies to support our decision-making process. These reports show us that the impact of our decommissioning work is very different at each of our sites.

On behalf of the Nuclear Decommissioning Authority, Economic Insight (<http://www.economic-insight.com/>) has carried out an 'Economic Impact Assessment' for the 12 Magnox sites.

Economic Impact Assessment of Magnox sites
(<https://www.gov.uk/government/publications/economic-impactassessment-of-magnox-sites>)

Dounreay socio-economic impact assessment

The socio-economic impact assessment conducted in 2014 recommended that NDA and DSRL focus on:

- physical infrastructure improvements at the 3 ports and Wick John O’Groat’s Airport
- inward investment activity
- skills development programme
- follow-on from previous interventions
- work with Chamber of Commerce for the Dounreay supply chain

Dounreay Socio-economic Impact Assessment Report 2014
(<http://www.dounreaystakeholdergroup.org/files/downloads/download2522.pdf>)

3. Our overall approach

Sellafield Ltd Social Impact Strategy 2018
(<https://www.gov.uk/government/publications/sellafield-ltd-socialimpact-strategy-2018>)

Magnox Ltd Socio-economic Plan 2016 to 2019

([https://www.magnoxsocioeconomic.com/assets/docs/Magnox%20Socio-economic%20plan%202016-19%20\(2017%20rev\)%20English.pdf](https://www.magnoxsocioeconomic.com/assets/docs/Magnox%20Socio-economic%20plan%202016-19%20(2017%20rev)%20English.pdf))

Socio-economic support for communities near Dounreay

(<https://www.gov.uk/government/publications/socioeconomic-support-for-communities-near-dounreay>)

4. Total Group Commitments

£10 million was the total NDA Group socio-economic expenditure in 2017/18.

Over 200 projects benefitted from NDA Group socio-economic programmes in 2017/18.

Organisation NDA Group socio-economic expenditure 2017/18

Organisation	NDA Group socio-economic expenditure 2017/18
Sellafield Ltd	£5,789,849
Copeland Community Fund	£1,545,000
Nuclear Decommissioning Authority	£1,208,325
Magnox Ltd	£689,398
Dounreay Site Restoration Ltd	£556,771
Caithness & North Sutherland Fund	£208,721
Low Level Waste Repository	£35,000

Main points

The total NDA Group expenditure is less than the previous year. This is partly due to a one-off commitment to Campus Whitehaven (<http://www.st-benedicts.cumbria.sch.uk/home/campus-whitehaven/campus-whitehavenlatest-news/>), which increased the total expenditure figure in 2016/17.

On behalf of the Nuclear Decommissioning Authority, Economic Insight (<http://www.economicinsight.com>) has carried out an 'Economic Impact Assessment' for the 12 Magnox sites.

Funding by category

Category	Total NDA Group socio-economic expenditure 2017/18
Economic and social infrastructure	£5,970,044
Economic diversification	Economic diversification
Other costs	£1,158,027
Education / skills	£1,107,272
Funding for Future Projects	£224,869
Employment	£172,500
Good neighbour projects	£132,687

For information on socio-economic projects funded in previous years, see the following case studies:

Scotland

- **Southern Scotland:** bringing new energy to local economy (<https://www.gov.uk/government/casestudies/bringing-new-energy-to-local-economy-in-southern-scotland>)
- **North Ayrshire:** Youth Employment Scheme (<https://www.gov.uk/government/casestudies/youth-employment-scheme-north-ayrshire>)
- **Caithness:** Scrabster Harbour (<https://www.gov.uk/government/casestudies/scrabster-harbour-caithness>)

England

- **Gloucestershire:** transformation of former nuclear site into college campus and business park (<https://www.gov.uk/government/casestudies/transformation-of-former-nuclear-site-into-college-campus-and-business-park>)
- **Cumbria:** Seascale community beach park (<https://www.gov.uk/government/casestudies/seascale-community-beach-park-project>)
- **Cumbria:** Investing in business (<https://www.gov.uk/government/casestudies/investing-in-business-west-cumbria>)

5. Wales

- **North Wales:** Gwynedd's Offer (<https://www.gov.uk/government/casestudies/gwynedds-offer-north-wales>)
- **North Wales:** Eryri Centre of Excellence (<https://www.gov.uk/government/casestudies/eryri-centre-of-excellence-north-wales>)

6. Magnox Ltd expenditure

£1,747,723 was the total Magnox Ltd socio-economic expenditure in 2017/18.

This includes:

- £689,398 committed by Magnox Ltd
- £1,058,325 committed by NDA (figure includes £98,325 for the Magnox Economic Impact Assessment)

Level of funding by each Magnox Ltd site

Site	Magnox Ltd socio-economic expenditure 2017/18	NDA expenditure 2017/18
Wylfa (Anglesey)	£319,643	£0
Trawsfynydd (North Wales)	£90,883	£465,000
Bradwell (Essex)	£93,599	£0
Dungeness A (Kent)	£69,315	£0
Chapelcross (Dumfriesshire)	£59,155	£495,000
Hunterston A (Ayrshire)	£16,060	£0
Berkeley (Gloucestershire)	£11,038	£0
Oldbury (South Gloucestershire)	£8,219	£0
Hinkley Point A (Somerset)	£6,060	£0
Harwell (Oxfordshire)	£5,968	£0
Winfrith (Dorset)	£5,221	£0
Sizewell A (Suffolk)	£4,237	£0

Magnox sites are classified into high, medium or low priority in relation to socio-economic intervention according to the prevailing socio-economic conditions in the community and the proximity to a significant change in operations and job numbers.

- High priority sites: Dungeness A, Trawsfynydd, Bradwell and Hunterston A
- Medium priority sites: Chapelcross, Winfrith and Wylfa
- Low priority sites: Berkeley, Harwell, Hinkley, Oldbury and Sizewell A

Main points

- This year we awarded a total of £68,000 for Good Neighbour projects, out of a total of £72,000 (£6k is allocated for each of the 12 sites).
- High priority sites receive the majority of funding, although it is important to note that if a robust transformational project is submitted and fits the criteria, it will be given due consideration on its merits.

- Once the economic impact assessment has been completed, it will provide a greater understanding of where funding is most needed.

Level of Magnox Ltd funding by category

Category	Magnox Ltd expenditure 2017/18	NDA expenditure 2017/18
Economic diversification	£239,099	£465,000
Economic and social infrastructure	£36,211	£593,325
Education / Skills	£173,555	£0
Employment	£172,500	£172,500
Good neighbour projects	£68,033	£0

Top 8 interventions across Magnox Ltd's communities

1. Beyond Chapelcross Phase II

Location	Total cost of the project	Total funding committed by NDA	Funding drawn down in 2017/18	Contribution from funding partners
Ayrshire	£995,000	£495,000	£55,000	£500,000

This project is a succession programme to the "CX Project – Beyond Chapelcross". It will enable NDA and other partner investments to create leverage at a very high level from national governments and the private sector.

It will devise customised projects around regeneration of Chapelcross as a 170 hectare site of national significance with bespoke industrial, commercial and energy space. There will be a significant push on inward investment, particularly for the energy market.

2. Trawsfynydd Transition Programme Phase III

Location	Total cost of the project	Total funding committed by NDA	Funding drawn down in 2017/18	Contribution from funding partners
Gwynedd	£900,000	£465,000		£435,000



Lake at Trawsfynydd

This is a continuation of phase 2 and a much broader programme of work with the opportunity to secure major multimillion pound investments, at both Trawsfynydd with the potential Small Modular Reactor (SMR) opportunity and the nearby Snowdonia Aerospace Centre in Llanbedr, securing inward investment. It will finance key Council posts/procure expert resources, fund feasibility work to de-risk local investment opportunities, support marketing and inward investment activity and cover other essential costs.

3. Môn Communities First: Next Steps (<https://www.moncf.co.uk/>)

Location	Total cost of the project	Total funding committed by Magnox	Funding drawn down in 2017/18	Contribution from funding partners
Anglesey	£670,315	£200,000	£100,000	£270,315

Awarded over 3 years – revenue costs for Delivery Manager and Training Team Co-ordinator plus academy costs to continue the delivery of the academy services.

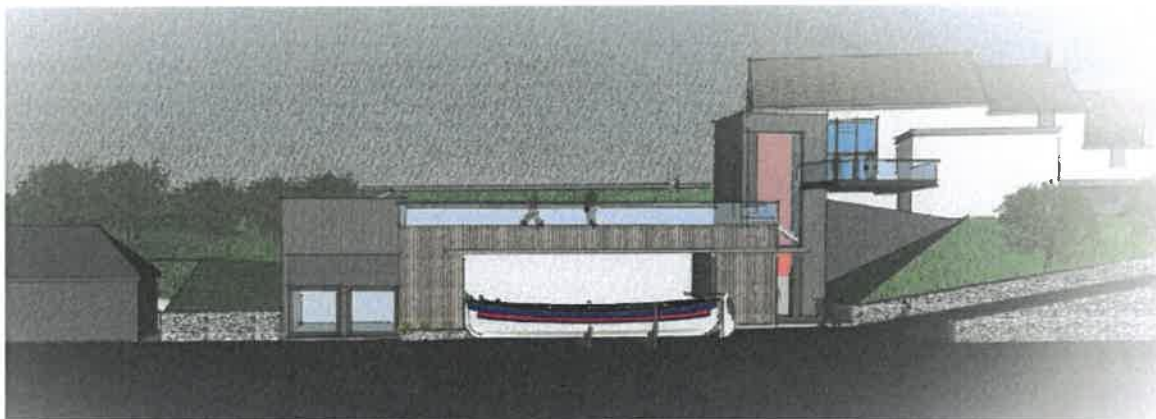
4. STEM Gogledd

Project to develop a bespoke STEM Hub to compliment mainstream services supported by STEM Co-ordinators and mentors.

5. Cemaes Community Interest Group

Location	Total cost of the project	Total funding committed by Magnox	Funding drawn down in 2017/18	Contribution from funding partners
Anglesey	£1,698,538	£150,000	£150,000	£1,548,538

Artist's impression of lifeboat visitors' centre



Purchase and develop Capel Bethlehem chapel as a sustainable tourist destination, creating 6 new business enterprises:

- 100 cover restaurant
- lifeboat visitors' centre



- 5 star Visit Wales self-catering accommodation
- Cinema and 2 retail outlets for lease

Other costs	£25,440	£0
Good neighbour projects	£20,001	£0

Main point

This year the majority of funding has been spent on:

- the legacy payment to Caithness Horizons Museum
- support to Project Management Services for the UK Vertical Launch project
- Wick Harbour High Water Protection Gate

Top 5 interventions across the Dounreay community

1. Scrabster Harbour Trust - St Ola Pier redevelopment project

(<http://www.scrabster.co.uk/portdevelopment/>)

Location	Total cost of the project	Total funding committed by NDA	Funding drawn down in 2017/18	Contribution from funding partners
Caithness	£300,000	£300,000	£150,000	

To support preliminary work in order to take forward the Ola Pier redevelopment project (circa £15million). To purchase the services of a Marine Civil Engineer and Principal Designer to take the project to Strategic Briefing stage and then to Outline Proposal and Tender Action stages of the Ola Pier Redevelopment.

2. Wick Harbour High Water Gate (design)

(<http://www.caithnesschamber.com/News/archive/nda-doubles-wick-harbour-gate-funding>)

Location	Total cost of the project	Total funding committed by Dounreay	Funding drawn down in 2017/18	Contribution from funding partners
Caithness		£125,000		



Wick Harbour

Funding for the design and tender process.

3. Support to Project Management Services (UKVL)

Location	Total cost of the project	Total funding committed by Dounreay	Funding drawn down in 2017/18	Contribution from funding partners
Caithness		£100,001		



UK Vertical Launch project

To allow the procurement of independent project management services. This support has allowed the development of the UK Vertical Launch project to move forward at the right pace as Highlands & Islands Enterprise, works with the UK Space Agency to secure support for North Sutherland as a site from which to launch small scale satellites from.

4. Caithness Horizons Museum (<http://www.caithnesshorizonsmuseum.com/>)

Location	Total cost of the project	Total funding committed by Dounreay	Funding drawn down in 2017/18	Contribution from funding partners
Caithness		£90,0001		£90,0001



Caithness Museum

This is a legacy commitment. This year (2017/18) sees the end of the historical agreement, however, Dounreay Site Restoration Ltd are working with Caithness Horizons on a new operating model for the future.

5. Dounreay Communities Fund (<https://dounreay.com/communities-fund>)

Location	Total cost of the project	Total funding committed by Dounreay	Funding drawn down in 2017/18	Contribution from funding partners
Caithness		£20,001		£20,001

This fund is for small donations for local initiatives and charity organisations.

8. Caithness & North Sutherland Fund

£208,721 was the total Caithness & North Sutherland Fund socio-economic expenditure in

Level of Caithness & North Sutherland Fund by category	
Category	Caithness & North Sutherland Fund socio-economic

Economic and social Infrastructure	£154,669
Economic diversification	£30,000
Education / Skills £14,399	£14,399
Good neighbour projects	£9,653
Top 5 interventions by Caithness & North Sutherland Fund	

1. Lieurary Hall Committee

Location	Total cost of	Total funding	Funding drawn	Contribution from
----------	---------------	---------------	---------------	-------------------

2. Caithness Voluntary Group-Befriending (<https://www.cvg.org.uk/our-projects/befriending-caithness/>)

Location	Total cost of the project	Total funding committed by C&NS Fund	Funding drawn down in 2017/18	Contribution from funding partners
Caithness	£64,642	£26,738	£2,809.93	£37,904



Befriending Caithness

Funding towards the costs of developing and delivering the Befriending Caithness 40-60yrs service, which offers supportive reliable relationships through volunteer befrienders to people who are referred to the service that would otherwise be socially isolated.

3. Pulteneytown Peoples Project (<http://www.pppwick.org.uk/>)

Location	Total cost of the project	Total funding committed by C&NS Fund	Funding drawn down in 2017/18	Contribution from funding partners
Caithness	£19,745	£14,398.81	£2777.50	£5,346

Funding towards the costs of establishing and developing an Older People Lunch Club Project at the Pulteney Community Centre in Wick, which will offer a wide range of social and structured activities as well as social games and activities that support cognitive development.

The sessions will also be supported by volunteers who are undertaking PPP New Beginnings Course, which provides the framework for people who have been long term unemployed or people developing their fundamental courses and knowledge to enable them to work within the care sector, giving volunteers the opportunity to gain work experience along with study.

4. Caithness Broch Project (<http://www.thebrochproject.co.uk/>)

Location	Total cost of the project	Total funding committed by C&NS Fund	Funding drawn down in 2017/18	Contribution from funding partners
Caithness	£32,989.30	£10,000	£4,745	£22,989

Caithness Broch Project

(<https://www.youtube.com/channel/UC4KRMWALETUptKT0bOWpSZg>)

Funding for the Caithness Broch Project to deliver a festival of participatory archaeological research activities involving local schools and the wider community.

The festival will focus on two broch sites offering hands-on training in the field of archaeology. This will encompass the whole archaeological recording process from finding objects in field-walking, to mapping, processing and reporting, bringing brochs to the forefront of the community and promoting Caithness as a heritage tourism destination, that will assist with the CB Project's longer term aim to replicate an Iron Age Broch as a tourist centre.

5. Thrumster Primary Parent Council

Location	Total cost of the project	Total funding committed by C&NS	Funding drawn down in 2017/18	Contribution from funding partners
Caithness	£57,949	£10,000	£10,000	£47,947



Thrumster footballers

Funding towards the costs of creating a new community all weather surface multi-use games area in the village of Thrumster at the local primary school. The area will provide outdoor space for a range of multiple sports that includes football, hockey, basketball, tennis and outdoor bowling as well as an additional area designed for play, road safety training and cycling proficiency.

9. Sellafeld Ltd expenditure

£5,789,849 was the total Sellafeld Ltd socio-economic expenditure in 2017/18.

Level of Sellafeld Ltd funding by category

Category	Sellafeld Ltd socio-economic expenditure 2017/18
Economic and social infrastructure	£4,751,816
Other costs	£696,166

Education / Skills	£341,867
--------------------	----------

Main point

This year's expenditure figure is lower than last year's, due to Sellafield Ltd's commitment to the infrastructure of the new Campus in Whitehaven. Sellafield Ltd contributed £10.5m in 2016/17 to the Campus, of which £4.1m was from 2017/18 budget.

Top 10 interventions by Sellafield Ltd

1. Whitehaven Regeneration (<https://becnorthshore.com/>)

Location	Total cost of the project	Total funding committed by Sellafield Ltd	Funding drawn down in 2017/18	Contribution from funding partners
West Cumbria	£4,100,000	£2,600,000	£2,600,000	£1,500,000



Artist's impression of the Buzz Station

North Shore project – contribution to the redevelopment of the old bus station into an innovation hub, supporting local micro-businesses.

2. Allerdale Social Fund (<http://www.allerdale.gov.uk/business/economic-growth/allerdale-siif.aspx>)

Location	Total cost of the project	Total funding committed by Sellafield Ltd	Funding drawn down in 2017/18	Contribution from funding partners
West Cumbria	£500,000	£500,000	£500,000	

Funding used to provide help to a wide variety of projects across Allerdale – investing in local businesses and jobs.

3. Copeland Social Fund

(<http://www.cumbria.gov.uk/yourcommunitysupport/communitygrants.asp>)

Location	Total cost of the project	Total funding committed by Sellafield Ltd	Funding drawn down in 2017/18	Contribution from funding partners
West Cumbria	£500,000	£500,000	£500,000	

Funding used to provide help with health and wellbeing initiatives in the Copeland area.

4. Well Whitehaven (<http://www.wellnorth.co.uk/pathfinders/well-whitehaven>)

Location	Total cost of the project	Total funding committed by Sellafield Ltd	Funding drawn down in 2017/18	Contribution from funding partners
West Cumbria	£1,000,000	£350,000	£350,000	£650,000

Support to Well Whitehaven programme.

5. The Beacon Museum (<http://thebeacon-whitehaven.co.uk/>)

Location	Total cost of the project	Total funding committed by Sellafield Ltd	Funding drawn down in 2017/18	Contribution from funding partners
West Cumbria	£325,000	£325,000	£325,000	



Sellafield Story at The Beacon

Support towards the Beacon as a tourist attraction which hosts a visitor centre-type experience for Sellafield Ltd.

6. West Cumbria Works (<http://www.westcumbriaworks.co.uk/>)

Location	Total cost of the project	Total funding committed by Sellafield Ltd	Funding drawn down in 2017/18	Contribution from funding partners
West Cumbria	£194,912	£194,912	£194,912	



West Cumbria Works

West Cumbria Works provides support to those seeking employment but lacking the necessary skills or confidence with access to an employment brokerage utilising our supply chain to help move them closer or into employment.

Support is provided across all 56 wards of Allerdale and Copeland with targeted support in the 27 most deprived wards.

7. Allerdale Youth Programme

Location	Total cost of the project	Total funding committed by Sellafield Ltd	Funding drawn down in 2017/18	Contribution from funding partners
West Cumbria	£84,036	£84,036	£84,036	

The youth programme is to provide youth work activity for 8-19 year olds in key urban and rural areas in West Cumbria, including those which feature highly in the Index of Multiple Deprivation or Vulnerable Localities.

8. The Freedom Project (<http://freedom-project-west-cumbria.org.uk/>)

Location	Total cost of the project	Total funding committed by Sellafield Ltd	Funding drawn down in 2017/18	Contribution from funding partners

				partners
West Cumbria	£73,370	£73,370	£73,370	

The Freedom Project provides advice, information, guidance, one-to-one and peer group mentoring, enabling victims, including children of domestic abuse to make long-term and lasting changes to their lives.

9. Copeland Youth Programme

Location	Total cost of the project	Total funding committed by Sellafield Ltd	Funding drawn down in 2017/18	Contribution from funding partners
West Cumbria	£60,000	£60,000	£60,000	

The youth programme is to provide youth work activity for 8-19 year olds in key urban and rural areas in West Cumbria, including those which feature highly in the Index of Multiple Deprivation or Vulnerable Localities.

10. Sponsorships and donations

Location	Total cost of the project	Total funding committed by Sellafield Ltd	Funding drawn down in 2017/18	Contribution from funding partners
West Cumbria	£100,000	£100,000	£100,000	

We have provided donations to 74 charities / community groups, of which 54 were in West Cumbria and 17 in Warrington.

10. Low Level Waste Repository (LLWR)

£35,000 was the total LLWR socio-economic expenditure in 2017/18.

Level of LLWR funding by category

Category	LLWR socio-economic expenditure 2016/17
Good neighbour projects	£35,000

Main points

LLWR has:

- supported 37 local projects
- a visits programme (including an Annual Open Day for the local community) which enables people to visit the site and meet with key members of staff. Approximately

60 visits per year capturing over 500 people are hosted by the Repository and include local, national and international visitors.

- committed to apprenticeships and employs apprentices in the following disciplines:
 - Business/Administration
 - E&I Craft
 - Mechanical Craft
 - E&I Design Engineer
 - Cyber Security & Process
- employees who engage with STEM activities and support local career fairs

Top 3 highest contributions made in 2017/18

1. First Lego League Challenge – STEM

Location	Total funding committed	Funding 2017/18
West Cumbria	£5,000	£5,000

First Lego League Challenge – STEM (<https://www.youtube.com/playlist?list=PLtIC0J - ClBtQnRw7BZKLywCIiKhZA5t>)

A five year sponsorship for three local junior schools supported by 10 Low Level Waste employees, working together as teams promoting STEM initiatives through a Lego Challenge against national schools. This is the second year of sponsorship and the competition is ongoing. At the time of producing this report. In the first year one of the sponsored local schools won the “Best Newcomer” award after getting through to the local finals.

2. Whitehaven Development Foundation Reading Project

Location	Total funding committed	Funding 2017/18
West Cumbria	£5,000	£5,000

The Reading Project has been launched with support from WRLFC players going into schools to lead reading sessions, followed by rugby sessions. The players are seen as role models and have been specifically trained in the art of listening to and encouraging young readers.

The project is in its infancy having only received funding in March 2018. However, past campaigns have focused on ‘reluctant readers’ and the current project plans to expand to encompass these youngsters. There are also health benefits associated with rugby aspects of the project. Plans for the school summer holidays are still being formulated.

3. Shackles Off Community Project

Location	Total funding committed	Funding 2017/18
West Cumbria	£2,500	£2,500

An annual fund established between LLWR and Drigg Parish Council to support Drigg Parish residents with further education and training needs. LLWR's contribution is match-funded by Drigg Parish Council.

A number of successful applications have been made and supported during the period.

11. Copeland Community Fund expenditure

£1,545,000 was the total Copeland Community Fund socio-economic expenditure in 2017/18.

Total socio-economic expenditure by category

Change between chart and table

Category	Copeland Community Fund socio-economic expenditure 2017/18
Education / Skills	£549,688
Social Infrastructure	£334,022
Other Costs	£436,421
Economic Diversification	£224,869

Copeland Community Fund was established in 2008 in recognition for the service Copeland provides to the nation by hosting the Low Level Waste Repository.

LLWR gives the Fund £1.5 million a year (with uplift every 5 years linked to CPI and capped at 3% for the lifetime of the consent. The first uplift was applied in December 2017) for every year that the repository is placing waste in its vaults. The money is spent in accordance with NDA's socio-economic policy.

A number of projects have been supported by the fund some of which are detailed below.

Contributions made in 2017/18

1. Phoenix Enterprise Centre

Location	Total cost of the project	Total funding committed by CCF	Funding drawn down in 2017/18	Contribution from funding partners
West Cumbria	£370,051	£310,051	£310,051	£60,000

Copeland Connect

2. Lowther Homeless Accommodation Project

Location	Total cost of the project	Total funding committed by CCF	Funding drawn down in 2017/18	Contribution from funding partners
West Cumbria	£255,000	£99,712	£99,712	£155,288

3. Enabling Fund

Location	Total cost of the project	Total funding committed by CCF	Funding drawn down in 2017/18	Contribution from funding partners
West Cumbria	£55,000	£55,000	£55,000	

Monies to support building capability in individual projects for future funding.

4. Home to Work Ltd

Location	Total cost of the project	Total funding committed by CCF	Funding drawn down in 2017/18	Contribution from funding partners
West Cumbria	£129,479	£44,500	£44,500	£84,979

5. Egremont Youth and Wellbeing Centre

Location	Total cost of the project	Total funding committed by CCF	Funding drawn down in 2017/18	Contribution from funding partners
West Cumbria	£83,150	£41,000	£41,000	£42,150

Development of life skills.

6. St Benedicts Rugby Union

Location	Total cost of the project	Total funding committed by CCF	Funding drawn down in 2017/18	Contribution from funding partners
West Cumbria	£160,000	£25,000	£25,000	£135,000

Playing Facility Improvement Project.

7. Kirkgate Arts (Arts Out West)

Location	Total cost of the project	Total funding committed by CCF	Funding drawn down in 2017/18	Contribution from funding partners
West Cumbria	£94,235.00	£24,000	£24,000	£70,235

Enhancing the cultural offer across Copeland.

12. Nuclear Decommissioning Authority direct expenditure

£1,208,325 was the total direct NDA socio-economic expenditure in 2017/18.

Level of NDA funding by category

Change between chart and table

Category	NDA socio-economic expenditure 2017/18
Economic diversification	£615,000
Economic and social infrastructure	£593,325

Direct interventions by Nuclear Decommissioning Authority

1. Beyond Chapelcross Phase II

Location	Total cost of the project	Total funding committed by NDA	Funding drawn down in 2017/18	Contribution from funding partners
Caithness	£869,315	£495,000	£55,000	£374,315

This is a succession programme to the CX Project – Beyond Chapelcross - which will continue to facilitate the NDA commitment to socio-economic regeneration in the eastern communities of Dumfries and Galloway.

2. Trawsfynydd Transition Programme Phase III

Location	Total cost of the project	Total funding committed by NDA	Funding drawn down in 2017/18	Contribution from funding partners
Gwynedd	£900,000	£465,000		£435,000

To maintain momentum in developing alternative economic uses for Snowdonia Enterprise Zone land.

3. Scrabster Harbour Trust - St Ola Pier redevelopment project

Location	Total cost of the project	Total funding committed by NDA	Funding drawn down in 2017/18	Contribution from funding partners
Caithness	£300,000	£150,000	£150,000	£150,000

Scrabster Harbour Trust aim to redevelop the Ola Pier to become a deep water berth suitable for larger ships.

4. Economic Impact Assessment for the Magnox sites

Location	Total cost of the project	Total funding committed by NDA	Funding drawn down in 2017/18	Contribution from funding partners
Multi	£98,325	£98,325	£98,325	

To improve evidence-based decision making in our socio-economic funding.

13. Outcomes and evaluation

Dounreay investment



Dounreay Communities Fund

- Nucleus archive opening: 4 additional jobs have been created, taking employment levels to 29 full-time equivalents.
- Secondments equivalent to 2.5 full-time employees.
- North Highlands Regeneration Fund in 2017/18 created 6 jobs and secured 5 jobs
- £4 million funding via Caithness and North Sunderland Fund leveraged an estimated further £7 million

Dounreay Socio-economic Annual review 2017 to 2018

(https://www.gov.uk/government/uploads/system/uploads/attachment_data/file/722374/DSEA_Annual_review_2017_18.pdf)

Magnox Ltd investment

Magnox socio-economic scheme

Funding awarded 2017-2018



Magnox funding objectives and outcomes

In 2017/18 £739,398 of Magnox Ltd funding supported 143 organisations that resulted in:

- 2 new businesses created
- 7 jobs safeguarded
- 51 employment opportunities
- 69 indirect jobs created
- 193 voluntary opportunities
- 5,201 training opportunities

Match funding



The Magnox socio-economic scheme has supported match funding and funded:

The Magnox socio-economic scheme has supported £2,391,759 match funding

Every £1 invested by the Magnox socio-economic scheme has secured £8 from other sources. The Magnox socio-economic scheme has supported £2,391,759 match funding and funded:

- 1 business event
- 13 STEM activities
- 35 sports activities
- 171 schools

