

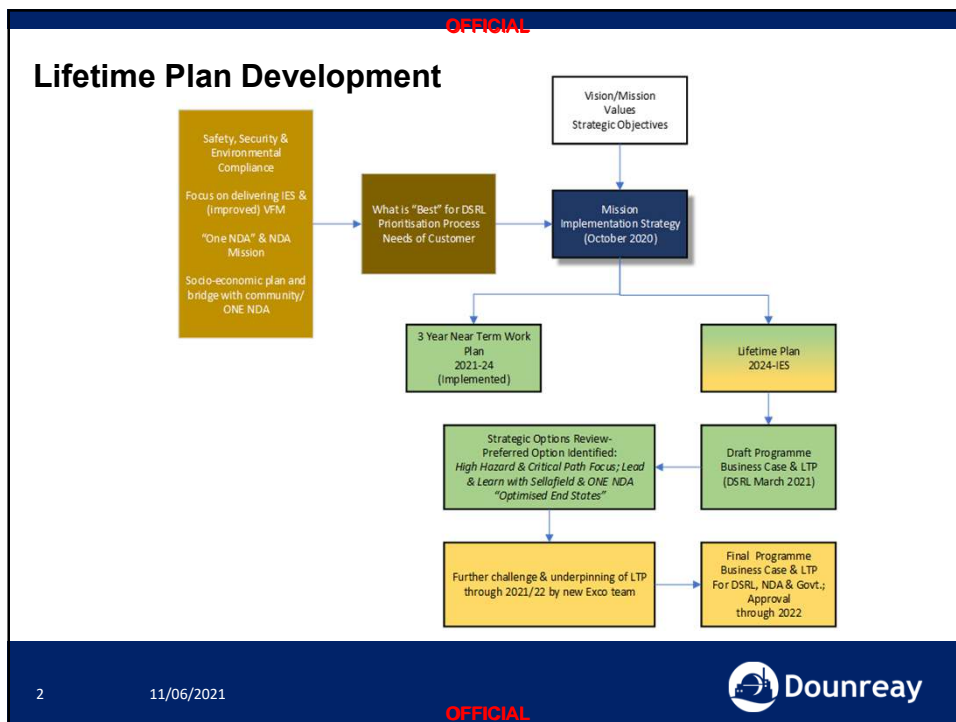
1

11/06/2021

OFFICIAL



1



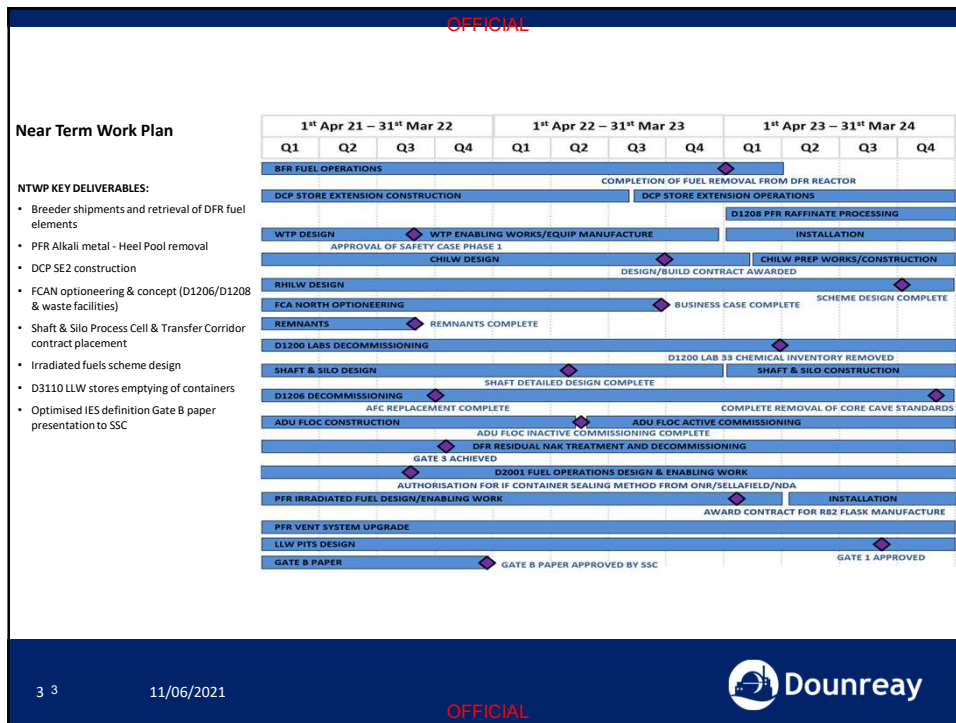
2

11/06/2021

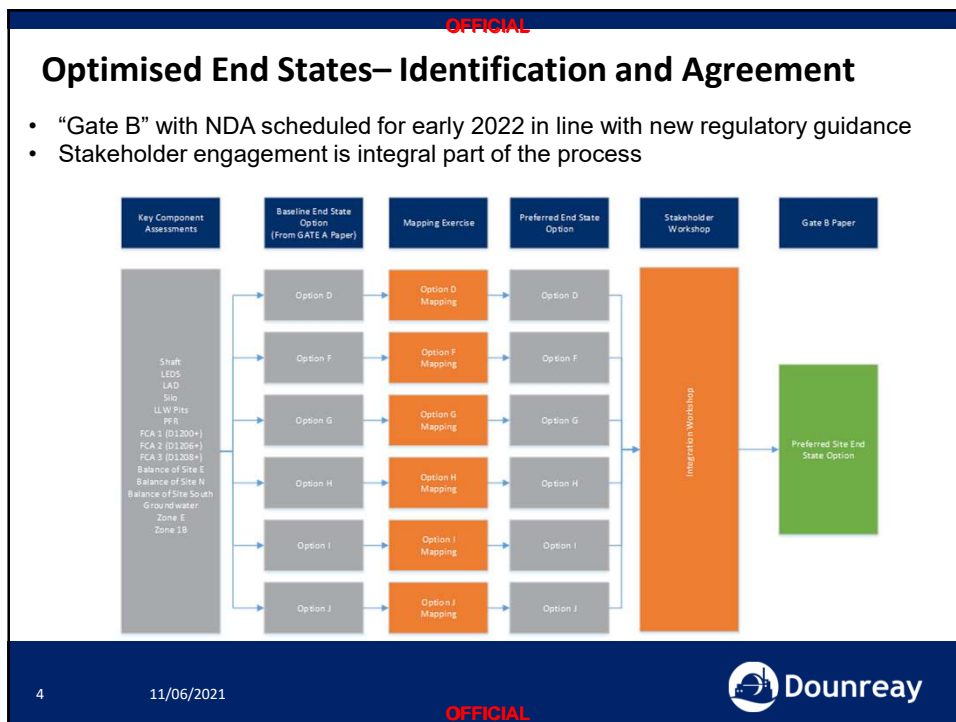
OFFICIAL



2



3



4

OFFICIAL

LLW Pits Options Assessment – key conclusions

- Current baseline plan is for *retrieval of the LLW Pits and disposal in D3100*
- Following Options Assessment workshop in January 2021, there was a Stakeholder preference for an *in-situ* option as part of GRR review
- Key arguments based on:
 - Worker Health & Safety, and Radiological Safety
 - Impact on local residents
 - Cost
- However -key caveats associated with an *in-situ* option:
 - DSRL ability to make an Environmental Safety Case for an *in-situ* option, and subsequent Regulator acceptance of an Environmental Safety Case is not clear or straightforward
 - Exemption to Groundwater Daughter Directive for any future groundwater management scheme granted by Regulator
- Further work is therefore being initiated to underpin and test this option
- In parallel, the retrieval option concept will continue to be developed
- Preferred closure option will be examined in the context of the wider Site Optimised End State Review

5

11/06/2021

OFFICIAL

